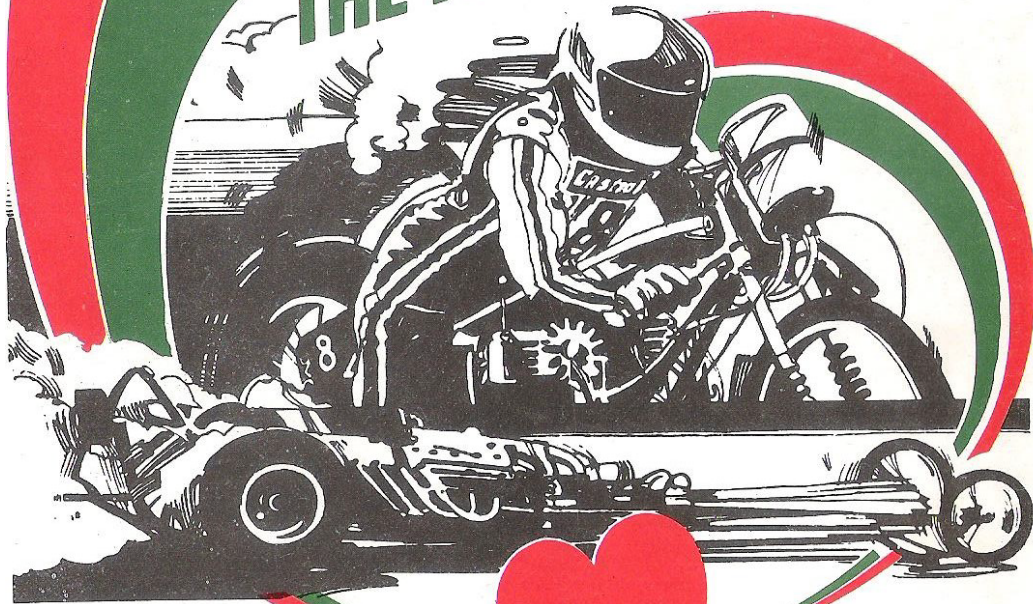


Castrol GT-X THE HIGH PERFORMER



Castrol
at the heart
of British Drag Racing

Published by Taylor-Startup Designed and produced by PKB Advertising Ltd

INTERNATIONAL DRAG RACING

Souvenir
Programme

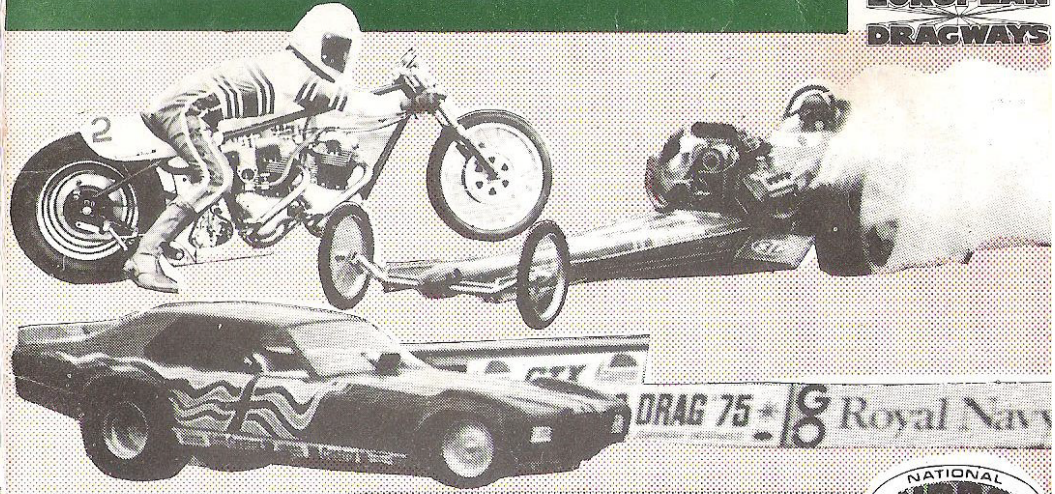
at the ROYAL NAVAL AIR YARD
WROUGHTON SWINDON

14th-15th June 1975

*Presented by European Dragways with the kind
permission of the ROYAL NAVY*

**TOR
LINE**

Featuring-Second Round of the
**TOR LINE EUROPEAN FUNNY
CAR CHAMPIONSHIP**



also featuring
3rd. Round of MOTOR CYCLE NEWS TOP
COMPETITION BIKE DRAG
RACING CHAMPIONSHIP

Wolferace Street Championship
208 Pro Comp Championship

**Programme
Price 30p**





Hi-Performance World

2a, Birkbeck Road, Beckenham, Kent

Europe's largest T-shirt selection

* 100's to choose from

* 25p for full colour catalogue

S.P.R.s drag racing pictorial No. 2 available 65p post paid.

TAYLOR-STARTUP

SPECIALIST DRAG RACING AGENCY

We make sound and film commercials, supply photos, articles, etc. We represent John Hobbs, Mick Butler, Roz Prior, The Stones and John Whitmore.

- * Agent for DLT's Commander Straker's UFO car from the TV series
- * Club badges, t-shirt designs, etc.
- * Agent for Chris Collings drag racing paintings
- * Agent for strip side advertisements

TAYLOR-STARTUP

94 Chiltern Road, Dunstable, Beds Tel: 0582 69594

Roz Prior FanClub

£1.25 per annum membership. Special reduced prices on exclusive Tee-shirt and REVELL KITS.

Support The Fast Lady
Details from: 1 Leeds Smith Drive, Sandy, Beds. Tel: Sandy 80083

The Stones Club

Support The STONES RACING TEAM

Colene Stone
8 Chaucer Close
Tilbury, Essex
Tel: Tilbury 5677

DAVE LEE TRAVIS Fang Club

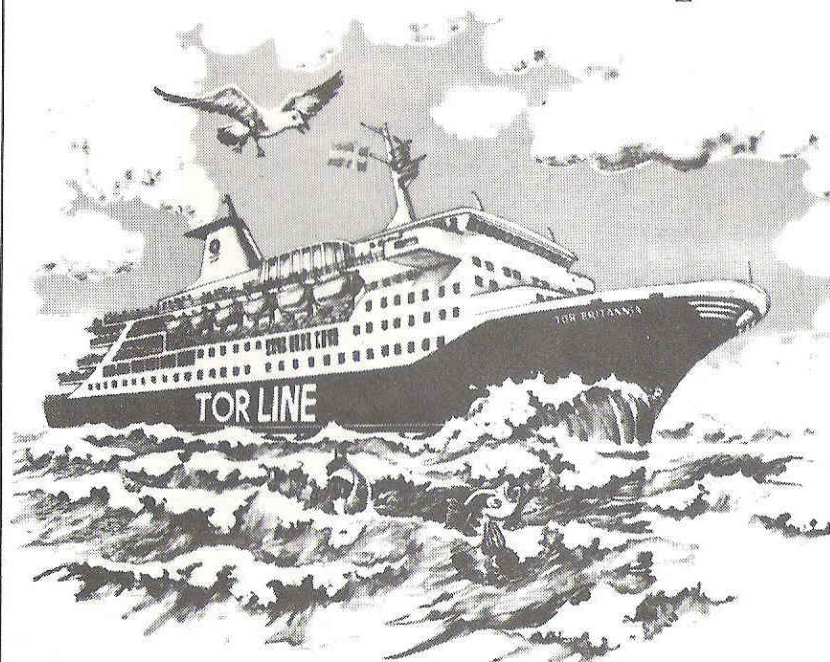
MAGGIE FARRON
48 WARWICK RD.,
WELLING, KENT.

PHONE LANCE ON
01-586-3525 or write to:

T SHIRT PRODUCTS

UNIT THREE, WORTON HALL,
WORTON ROAD Isleworth,
Middlesex TW76 ER

EUROPEAN FUNNY CAR CUP Presented by



TOR LINE

HOW A DRAG RACE WORKS

Like cricket you will enjoy drag racing more if you know what is going on. Here is the basic make-up of a drag race meeting. For greater detail purchase an NDRC rule book.

A drag race comprises an initial period of PRACTICE and QUALIFYING, followed by the main racing programme called the ELIMINATIONS.

One of the great attractions of drag racing is the wide variety and classes of race vehicles. Accordingly, there are several divisions of competition. The four basic "types" of drag racing machines are:

DRAGSTER * COMPETITION ALTERED * STREET * MOTORCYCLE

These are sub-divided by a system of classes into specific divisions of eliminations, on a capacity to weight basis.

TOP FUEL DRAGSTER (A/D) Supercharged, using nitro-methane fuel, with a total factored capacity minimum of 610 cu. in.

TOP DRAGSTER (T/D) 3.99 lbs/cu. in. or less.

SENIOR DRAGSTER (S/D) 4.00 to 5.49 lbs/cu. in. (side valve engined cars with a minimum of 2.5 lbs/cu. in. are included in S/D).

MIDDLE DRAGSTER (M/D) 5.50 to 6.99 lbs/cu. in.

JUNIOR DRAGSTER (J/D) 7.00 or more lbs/cu. in.

FUNNY CAR (A/FC) Full-bodied cars using nitro-methane, supercharged and with minimum of 610 cu. in.

TOP COMPETITION (T/C) Bodied full-competition cars not meeting A/FC and with 2.99lbs/cu. in. or less.

SENIOR COMPETITION (S/C) 3.00 to 4.49 lbs/cu. in.

MIDDLE COMPETITION (M/C) 4.50 to 6.99 lbs/cu. in.

JUNIOR COMPETITION (J/C) 7.00 lbs/cu. in. or more.

PRO-STOCK (PRO) Ultimate stock-based street cars to the Pro-Stock formula.

SUPER STREET (A/M or A/SA) Originally a production car but unlimited modification away from stock condition (modified) or complete engine change (street altered), both 6.00 to 8.49 lbs/cu. in.

TOP STREET (T/S or T/SA) 8.50 to 10.99 lbs/cu. in.

SENIOR STREET (S/S or S/SA) 11.00 to 14.99 lbs/cu. in.

MIDDLE STREET (M/S or M/SA) 15.00 to 19.99 lbs/cu. in.

JUNIOR STREET (J/S or J/SA) 20.00 or more lbs/cu. in.

As you can see the prefix letter indicates sub-division and the suffix the main division of elimination (e.g. S/C 12 is a Senior Competition (Altered) with race number 12). All the above eliminations are raced on an equal start of "head-up" basis. Stock Production cars are run on a handicap basis. The handicaps are determined by the difference between Class records. Normally, two eliminations are raced, made up from the quickest cars from the 14 Production classes that exist. These classes range from A/Production (A/P) at 8.00 to 9.99 lbs/b.h.p. to N/Production (N/P) at 55.00 lbs/b.h.p. or more. Note that DIN b.h.p. to weight determines Class in Production and not capacity to weight.

For 1975 a new elimination called Pro-Competition has been instated, incorporating T/D and T/C. In this elimination supercharged cars are restricted to methanol or petrol, whilst unblown cars run any percentage of nitro-methane. (Any supercharged nitro-methane burning T/C wishing to remain on fuel must therefore run in A/FC.)

It should be noted that in calculating capacity/weight ratios that premiums are added for use of superchargers, nitro-methane fuel, etc. (See NDRC rule book).

Returning to the format of race, the eliminations fields are made up from elapsed times (ET) recorded during the practice/qualifying session. For example: Top Street, say 8 quickest cars make up the elimination from an 11 car entry. Numbers of entries permitting, elimination fields are increased by factors of 8, i.e. 16, 32, etc. So runs made in practice/qualifying session mean a lot, especially if you are in the "bump spot" - number 8 position!

Finally, because of the different factors affecting motorcycles the eliminations are determined purely by elapsed time, i.e. Top Bike elimination is formed from the quickest eight bikes regardless of capacity.

MOTOR CYCLE CLASSES: All competing vehicles will be divided into the following capacity classes within their appropriate divisions:

Class 'A' - 1301 - 2000cc	Class 'D' - 501 - 750cc
Class 'B' - 1001 - 1300cc	Class 'E' - 315 - 500cc
Class 'C' - 751 - 1000cc	Class 'F' - 240 - 350cc

This capacity classification letter will prefix the division letter which will prefix the competitors number. e.g. F/S101 indicates a 300cc Street Solo - number 101.

DIVISIONS: There will be two divisions for all competing vehicles:

- 'S' - Street Solo
- 'C' - Competition Solo

'S' - STREET: Open for all motorcycles which are street legal, taxed and insured. Proof of both these latter two must be produced.

'C' - COMPETITION: Open for all motorcycles designed and constructed for out-and-out racing.

Elimination racing will be constituted as follows with eligibility determined by elapsed times recorded during the qualifying timed runs held prior to the elimination:

MOTOR CYCLE SUB-DIVISIONS OF ELIMINATIONS

TOP COMPETITION: Consisting of the quickest eight qualifiers.

SENIOR: Consisting of the next eight qualifiers.

MIDDLE: Consisting of the next eight qualifiers.

JUNIOR: Consisting of the next eight qualifiers with no motorcycle over Class E.

TOP STREET: Quickest eight qualifiers.

SENIOR STREET: Next fastest eight.

Further elimination brackets in Street Motorcycle will be considered as entries demand.

TOR LINE EUROPEAN FUNNY CAR CHAMPIONSHIP WROUGHTON, SWINDON ORGANISED BY NATIONAL DRAG RACING CLUB SATURDAY 14th JUNE and SUNDAY 15th JUNE 1975

This meeting is held under the General Rules of the Royal Automobile Club and the Auto Cycle Union under RAC Permit Number RS 10348 A.C.U. Permit 9977.

R.A.C. Steward - To be appointed

R.A.C. Scrutineer - Capt. T. Hales

Club Stewards

R.A.C. Time Keepers

Mr. H. Jakes

Mr. J. Wolfe

R.A.C. 1a Timekeeper

Mr. Fahey

Clerk of the Course

Mr. C. Jones

Secretary of the Meeting

Miss J. Noakes

First Aid

St. John Ambulance Brigade

Marshalls

Members of the National Drag Racing Club

Public Relations Officer

Mr. E. T. Macknight

Motor Cycle Scrutineer

Mr. P. Scales

N.D.R.C. Stewards

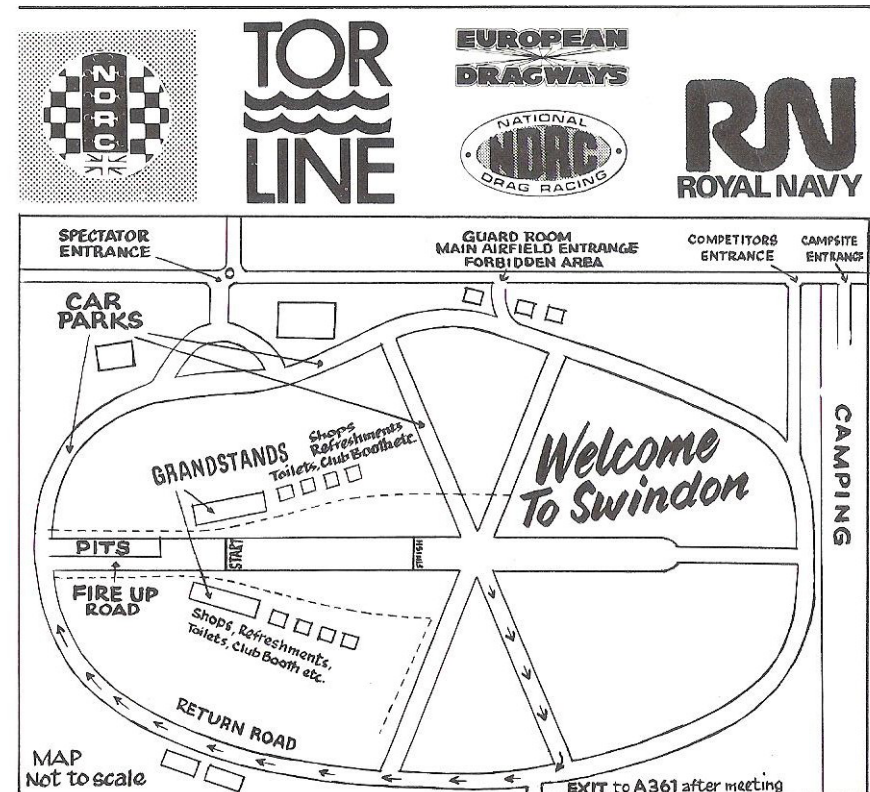
C. Urlwin, D. Owen

Commentators

Alan Wigmore, Mike Matthews and Jim Reynolds

Doctors

To be appointed



T SHIRT PRODUCTS

**YOU CAN PROMOTE
YOUR PRODUCT
OR TEAM
FOR LESS
THAN YOU THINK**



Let us quote you for PRINTED 'T' SHIRTS, FLEECY-LINED SWEAT SHIRTS, P.V.C. STICKERS, IRON-ON TRANSFERS, HATS, etc., etc.



**COMPETITIVE PRICES.
QUALITY with
QUICK SERVICE**

Runs from 50-50,000

OUR CLIENTS INCLUDE:
COCA COLA, WATNEYS, FIRESTONE,
CANADIAN CLUB, RADIO LUXEMBOURG,
UNIROYAL, UNIVERSITIES, ASSOCIATIONS,
FAN CLUBS, RACING TEAMS, etc.

ALSO IN STOCK, EXTENSIVE RANGE OF FUNKY AMERICAN LITHOGRAPHIC TRANSFERS.

PHONE LANCE on 01-568-3525 or write to:

T SHIRT PRODUCTS

UNIT THREE, WORTON HALL, WORTON ROAD Isleworth,
Middlesex TW76 ER

The Snake & The Mongoose dynamic duellers!

Two more big names from Revell. Don "The Snake" Prudhomme and his Go Army Fueller. And Tom "The Mongoose" McEwen with his Fly Navy Digger. Both in action-packed 1/16th scale, so authentic you can almost smell the slicks.

Both kits are packed with mind-blowing detail. Real fabric seat belts and shoulder harness. Cragar "Super Trick" wheels. Full spark plug wiring. Great silver chunks of 480 cu. in. Plymouth Hemi engines. And colour decal sheets that are so full you'll wonder if there's room for it all!

in big 1/16th



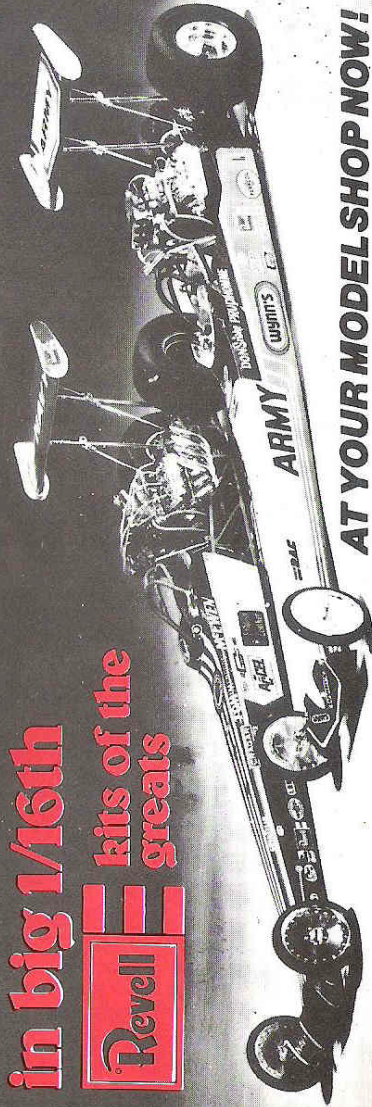
**kits of the
greats**

That's what Revell dragster kits are all about. Big names. And detail that almost bursts out.

That's how it is with the Mighty Mongoose. And the Slippery Snake. So build them both - soon! Model Nos. 1489 and 1490. From Revell, the World's largest manufacturer of plastic model kits.

Get the 48 page full colour 1975/6 Revell model catalogue or send 30p to:-

Revell (GB) Ltd., Cranborne Road, Potters Bar, Herts. EN6 3JX.
Tel. Potters Bar 58261.



AT YOUR MODEL SHOP NOW!

CUSTOM PAINTWORK



CUSTOMIZING IS OUR SPECIALITY: Roof chops - Flared arches - Rebuilds - etc.
- Murals - Flames - Cartoons
- Op-art - Any specialist paint work - Suppliers of all Metalflake products, i.e. Vreeble
- Pearl Candy - Flake - Lacquer

We are the experts!

Send large SAE now for price lists and further details.
Colour Charts 85p each.

We painted Miss Revell's Fast Lady and the 'Stones' Tender Trap

CUSTOM CAR CENTRE, SOMERSET ROAD, BOSCOMBE,
BOURNEMOUTH, DORSET. Telephone: Bournemouth 37173

Only the best from

wolfrace

wheels



Many applications for a wide range of cars

Beware of imitations

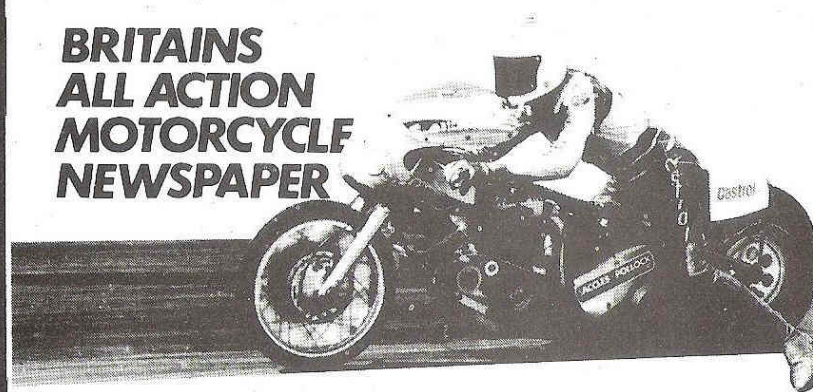
FOR FURTHER DETAILS CONTACT: Wolfrace Wheels Ltd., Elms Industrial Estate,
Shuttleworth Road, Goldington, Bedford. Telephone: 0234 62535/6/7

REV UP and BLAST OFF

WITH

MOTOR CYCLE

**BRITAIN'S
ALL ACTION
MOTORCYCLE
NEWSPAPER**



Full reports and features
on Drag Racing, Road Racing
Scrambling, Speedway and all the
industry news as it happens.

FOLLOW THE DEVELOPMENT OF THE MOTOR CYCLE
BACKED JOHN HOBBS PROJECT.

OUT EVERY WEDNESDAY

NOTICE – WARNING TO THE PUBLIC – MOTOR SPORT IS DANGEROUS

It is a condition of admission that all persons having any connection with the promotion and/or organisation and/or conduct of the meeting, including the owners of the land and the drivers and owners of the vehicles and passengers in the vehicles are absolved from all liability arising out of accident causing damage or personal injury (whether fatal or otherwise) howsoever caused to spectators or ticket holders.

PROHIBITED AREA NOTICES

The Public are not permitted in areas where the notices are displayed.

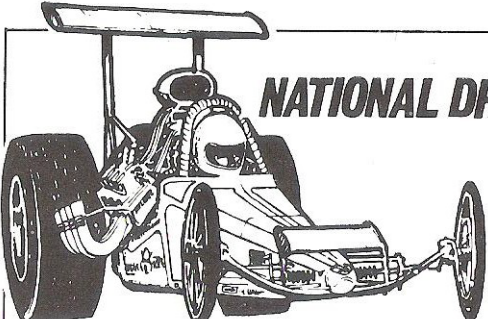
PLEASE TAKE YOUR LITTER HOME WITH YOU OR USE THE BINS PROVIDED VEHICLES PARKED AT OWNERS' RISK

Neither the Club, nor its officials, nor the promoters, shall be liable for any loss, damage or injury (including fatal injury) occurring to any person or vehicle or its fittings or contents or to any property during or in consequence of any vehicle or property being taken to or left at or removed from the car park.


DOGS

It is a condition of admission to the Circuit and Car Parks that no dogs are allowed. Any person found to be in breach of this condition will be deemed a trespasser and will be required to leave.

The organisers reserve the right to cancel, alter, or amend the programme depending on the number of entries, mechanical failure, weather or any other conditions beyond their control. All efforts are made to ensure that all information in this programme is correct.



NATIONAL DRAG RACING CLUB



MEMBERSHIP APPLICATION FORM

If you dig the 'Digs' – Drag Racing that is – and want to help promote the Sport in Europe and maybe race too – then lend your support by joining the NDRC. The Club organises race meetings around the country, showing Drag Racing to as many people as possible, helping to promote the concept of local drag strips and local Clubs, so that the Sport may really grow.

Value for money! The annual £2.50 membership fee (plus 50p enrolment) gets you –

- Reduced subscription to national Drag Racer Magazine.
- Inexpensive participation in motor racing
- Race meetings
- Film shows and technical forums
- Social evenings
- Entry to the annual NDRC Californian trip
- Discounts, badges, decals . . . and part of the action!



SUPPORT BRITISH DRAG RACING – JOIN NATIONAL DRAG RACING CLUB
Visit the NDRC stand at Race Meetings for further details, Club badges, decals.

NATIONAL DRAG RACING CLUB MEMBERSHIP FORM

Join the N.D.R.C. The Drag Racers Club, and get: 12 issues of National Drag Racer at a discount. **MEMBERSHIP – £2.50 PER YEAR** (plus 50p enrolment) plus details of discount schemes for members.

I, the undersigned, wish to make application to join the National Drag Racing Club. I agree to abide by the rules of the Club.

SIGNATURE

as husband/wife of the above I wish to apply for Social Membership £0.50 per year

SIGNATURE

NAME (Capitals) Age Tel. No.

ADDRESS

NEW MEMBER YES/NO DRAG RACING INTERESTS

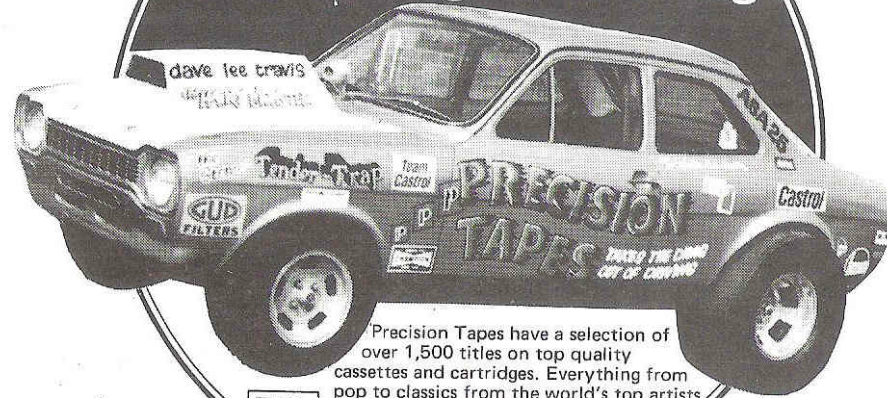
CAR/BIKE OWNED.....

SEND RACE ENTRY FORMS YES/NO, I ENCLOSE £..... CHEQUE, ETC., PAYABLE TO N.D.R.C.

Send to: N.D.R.C., 209/211 North Street, Romford, Essex.

BECOME PART OF THE FASTEST ACCELERATING SPORT IN THE WORLD!

JOIN N.D.R.C. TODAY!



PRECISION TAPES
Take the Drag out of Driving

Precision Tapes have a selection of over 1,500 titles on top quality cassettes and cartridges. Everything from pop to classics from the world's top artists. Send for free catalogue to: Precision Tapes Ltd, Precision House, 11 Denmark Street, London WC2H 8NR.

AMERICAN AUTOMOBILE SPECIALISTS



WE ARE THE GREATEST!

**8.07 E.T.
180 M.P.H.
RECORD
HOLDERS**

ID. B. MOTORS
of Leicester

Large stocks of replacements such as gaskets, water pumps, brakes, exhausts and ignition spares. Specialized spares for accident repairs available

PHONE: 0533-834343 TELEX: 341071

MANUFACTURER'S PARTS AND PERFORMANCE GOODIES. IMPORTED TO ORDER FROM OUR OWN INDIANA, U.S.A. SET-UP.

N.D.R.C. TROPHY MEET

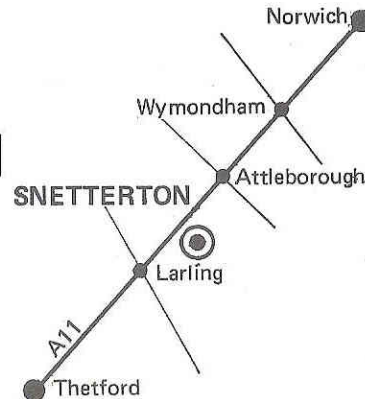
AT EAST ANGLIA'S OWN DRAG STRIP

SNETTERTON 20th JULY

OFF A11 - SOUTH OF NORWICH

SPECIAL FUELER & FUNNY CAR MATCH RACING

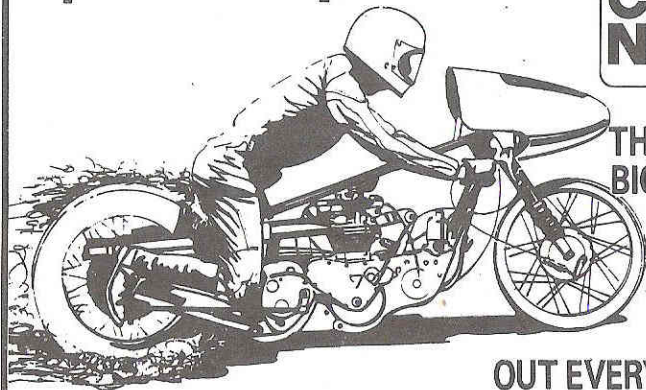
CHILDREN UNDER 12 FREE
ADMISSION INCLUDES: PITS;
PADDOCK & SPECTATOR
ENCLOSURES



The organisers reserve the right to cancel, alter, or amend the programme depending on the number of entries, mechanical failure, weather or any other conditions beyond their control. All efforts are made to ensure that all information in this programme is correct.

FOLLOW 'Straight Up'

by Jim Reynolds in



THE WORLD'S
BIGGEST SELLING
MOTORCYCLE
NEWSPAPER

OUT EVERY WEDNESDAY

TOR LINE FUNNY CAR CHAMPIONSHIP MEETING

A very warm welcome from the National Drag Racing Club and European Dragways to both the seasoned drag racing fans and all the newcomers seeing drag racing for the first time here today. If this is your first time, you couldn't have picked a better meeting; today you'll be seeing many of Europe's best cars engaged in some really dynamic and thrilling racing.

We're very pleased to be running again at this beautiful Wroughton venue, and our thanks must go to the Royal Navy for their kindness in allowing us to use the facilities here.

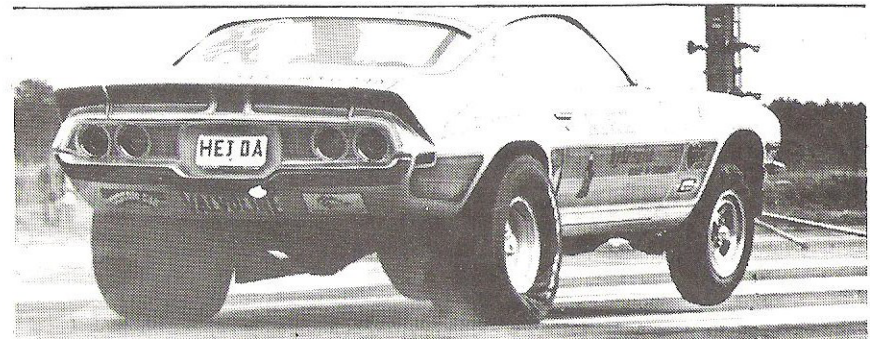
Sponsor of the European Funny Car Championship, the second round of which you are witnessing today, is Tor Line, best known for their excellent passenger ferry service to

Scandinavia. All the Swedish cars you see here today travelled to this country by Tor Line, and English cars will be using the same method to travel to Sweden for the third round.

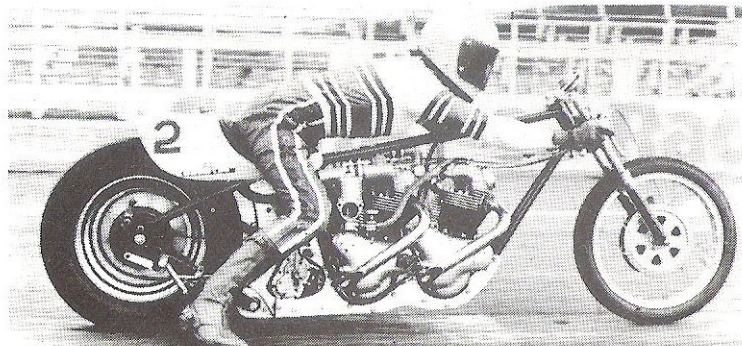
You'll also be seeing Top Fuel Dragsters here today, plus Competition cars, Street cars competing in the Wolfrace Championship, and plenty of big bikes all contesting the Motor Cycle News Top Bike Championship, this round of which is sponsored by Terrison Engineering. The 208 Pro Comp. Championship should also provide some interesting races.

We hope you enjoy the drag racing here today - please drive carefully on your way home and we hope to see you all again at our next meeting.

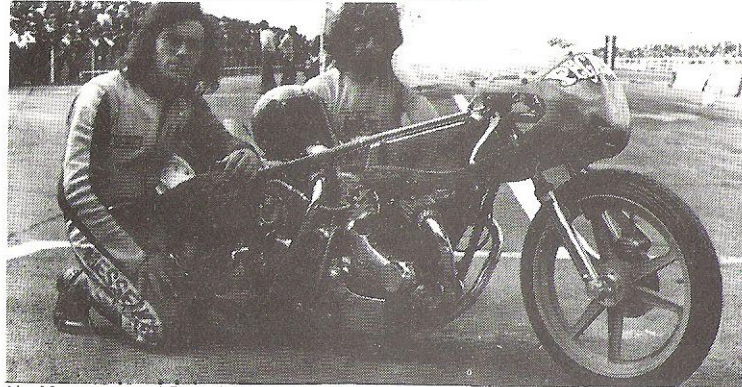
STOP PRESS. First round of TOR LINE Funny Car Championship was rained off, so all square is the position.



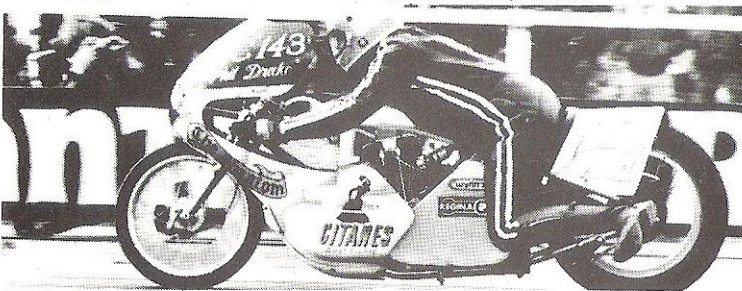
Popular Swede Gunne Back in his Pro Stock



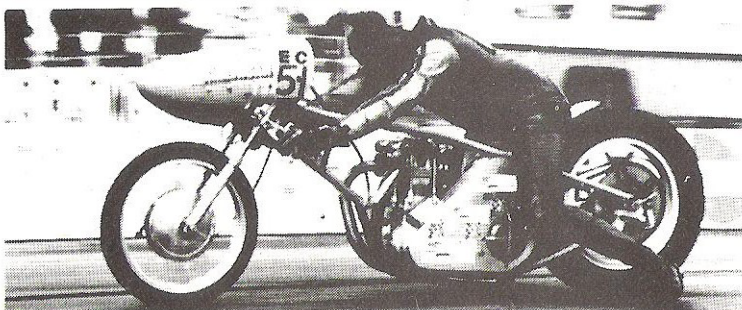
Mick Butler's double-engined Super Cyclops Hobbislayer



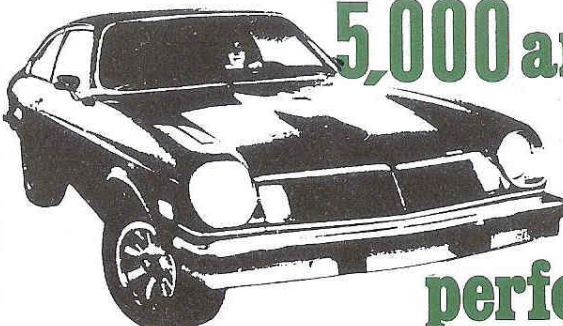
Ian Messenger and Derek Chinn with their immaculate Pegasus bike




Phil Drake's Gitanes sponsored 750cc Triumph



Tony Weedon on his world record holding 500cc Triumph



5,000 american spares and performance lines

JOHN WOOLFE RACING 

<p>Head Office Orders - Mail Order Warehouse: Elms Industrial Estate Sharnworth Road Goldington Bedford England Telephone: Bedford 54232</p>	<p>London Shop Retail: 3 Staples Corner North Circular Road Edgware Road London, NW2 Telephone: 01-450 6231</p>	<p>Telex No. 825483</p>
---	---	-------------------------



Prospective Advertisers for this programme should phone 0582 69594

INSURANCE IN MOTION

WE CATER FOR:

- * Competitive Insurances
- * All Vehicles
- * Any Age Group

WE OFFER:

- * Reputable Insurance Companies and Lloyds Underwriters
- * Short-Term cover for UK and Europe
- * Return of Post Service

DO YOU FULLY UNDERSTAND YOUR HOUSEHOLD, PERSONAL AND BUSINESS INSURANCES?
WE HAVE VERY GOOD FACILITIES TO ASSIST YOU.

NAME ADDRESS

..... BUSINESS/PLEASURE USE. FULL/PROVISIONAL LICENCE FOR YEARS

OCCUPATION AGE

COMPT./THIRD PARTY/T.P.F.&T. COVER. MAKE OF CAR. MODEL. C.C.

VALUE YEAR. CAR GARAGED/LEFT IN OPEN. PRESENT INSURERS

NO CLAIM BONUS YEARS. WILL CAR BE USED BY ANYONE UNDER 21?

I WILL PAY MY PREMIUMS CASH/CHEQUE

If you are interested in receiving our quotation kindly complete the coupon

ROY OSBORNE c/o OSBORNE & SONS (INS. BROKERS) LTD. 2 ROSEHILL, SUTTON, SURREY

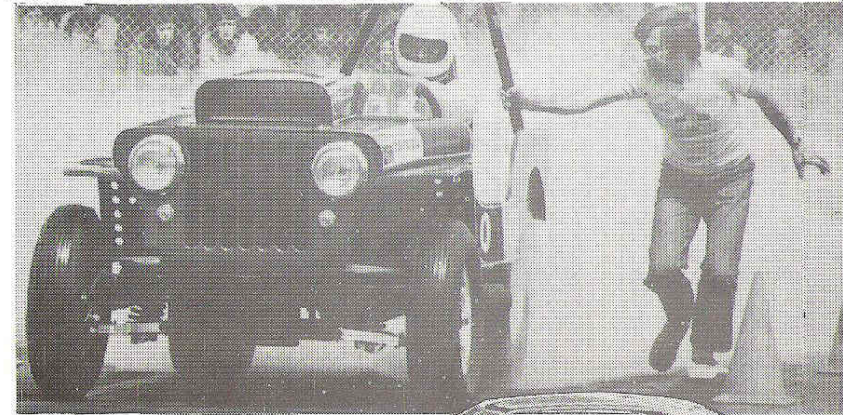
OR PHONE 01-644 6128/9/0 : 01-641 2016 MEMBERS OF THE ASSOCIATION OF INSURANCE BROKERS

REGISTERED COMPETITORS

No.	NAME OF DRIVER	NAME OF CAR	ENGINE MAKE	c.c.
DRAGSTERS:				
AD/6	DENNIS PRIDDLE	MR. REVELL	DONOVAN	7277 s
AD/6	GERRY ANDREWS	HEMI-HUNTER	CHEVROLET	7000 s
AD/8	TREVOR YOUNG	REVOLUTION III	CHRYSLER	6400 s
AD/9	ROZ PRIOR	MISS REVELL'S FAST LADY	CHRYSLER	6400 s
TD/16	J. Wright	Rainmaker	Chevrolet	7000
TD/40	P. JONES	THE RATTLE	CHRYSLER	5427 s
TD/46	KEITH STACEY	WISKEY PEDDLAR	FORD	2993 s
TD/66	J. Siggery	Geronimo	Oldsmobile	6125
TD/68	JEFF MORRIS	MALABU EXPRESS	CHEVROLET	7000
TD/70	A. D. FROOME	NITROMANIA	Pontiac	6700
SD/19	KEN COOPER	BLAST FROM THE PAST	MERCURY	4688
SD/26	ALAN SHARPE	METHS DRINKER	JAGUAR	V12
SD/31	JIM READ	AUTO FROG	FORD	5919
SD/34	RUSS CARPENTER	EVEN MORE TROUBLE	DAIMLER	2500 s
SD/37	COLIN MITSON	CHAIN REACTION		4500
SD/44	P. GAZEY	BANANAS	BUICK	5276
SD/45	IAN FRASER	ECONORAIL	FORD	2993 s
SD/51	JAMES ROWAT	DOUBLE OR QUITS	CHEVROLET	4787
SD/52	M. Dibley	Pink Panther	Chevrolet	4639
SD/72	B. Havnes	Quarter Horse II	Ford	4758
MD/22	C. FALCONER	MOONRAKER	BMC	1200 s
MD/23	KEN PENFOLD	PATIENCE	TRIUMPH	748 s
MD/25	KEITH ELLIOT	BEAM BREAKER	JAGUAR	3471
MD/28	GEORGE DAVIE	PUB CRAWLER	JAGUAR	3800
MD/29	D. DEKKER	GREEN DRAGGIN		
MD/32	JOHN WHITMORE	DRAG'N'FLY II	BLMC	1270 s
MD/35	JOHN ROTHERHAM	AVANTI	FORD	1498 s
MD/39	GLENN READ	THE GRADUATE	FORD	1998
MD/43	B. J. COOKE	FRANK TOO	Ford	3000
MD/49	R. O. Acocck	OTHULHU TWO	JAGUAR	3800
MD/53	RICHARD JARMAN	STRIP STAR	FORD	1998
JD/13	RICHARD STEADMAN	QUICK SILVER	BLMC	948 t
JD/14	GERALD COOKSON	JOKER	BLMC	1071 s
JD/15	R. GEORGE	MIDNIGHT CREEPER	Ford	1498
JD/20	STEVE MARTYN	INSTANT ACTION	FORD	1600
JD/21	STEVE CLARK	BLACK WIDOW	FORD	1498
JD/24	MIKE ROYSTON	SIDE WINDER	BMC	1200
JD/27	MIKE SAYERS	IMPACT 3	CHRYSLER UK	998 s
JD/30	JANET TRINDER	WORDEN	FORD	1498
JD/33	I. SHANKS		DAIMLER	2548
JD/36	MAURIE THOMAS		LOTUS	975
JD/41	C. HARVEY	HARRY HONKER	BSA	650
JD/47	R. Harman	Mothers Ruin	Triumph	748
JD/48	D. MILLER	AUSTIN	BMC	998
JD/54	BRIAN PARKINS		TRIUMPH	740
JD/59	P. G. GAYTON	AUTHORITY	Triumph	650
JD/73	K. GERRARD	NIGHTFALL ONE	BMC	970
JD/78	R. M. WILBY	THE WILEY BROS.	Ford	1498
JD/82	R. Bottoms	Strip Kartoon	Triumph	740
FUNNY CAR:				
AFC/4	ROLAND PRATT	REVELLS HILLBILLIES	CHRYSLER	6400 s
AFC/1	LIAM CHURCHILL	THE STING	CHRYSLER	6400 s
AFC/7	CLIVE SKILTON	VAUXHALL	DONOVAN	7277 s
AFC/10	DENNIS PRIDDLE	AVENGER	DONOVAN	7277 s
AFC/9	PETER BARNETT	CASTROL VX490	CHRYSLER	6400 s
COMPETITION ALTERED:				
TCA/2	MIKE HALL	SHUTDOWN	CHRYSLER	6426 s
TCA/5	DAVE STONE	TEE-RAT	CHEVROLET	7000 s
SCA/1	CLIVE PAGE	PANIC	CHEVROLET	7000
SCA/18	RICHARD SHARP	DORSET HORN	PONTIAC	7017
SCA/19	BOB DIECHEN	MAJESTY	DAIMLER	4561
SCA/36	JOHN DICKSON	GOOD VIBRATIONS	OLDSMOBILE	8000
SCA/49	TONY PRESTON	REALITY	CHEVROLET	4787
ACA/3	JOHN MORTON	INVADER	CHEVROLET	5738
MCA/10	DAVID NESBITT	FRENCH CONNECTION	CHEVROLET	4787
MCA/13	S. SHORR	LITTLE BIG HORN	PONTIAC	6722
MCA/14	R. MESSENT	STRIPTEASER	JAGUAR	3800
MCA/16	PHIL CARLYLE	BLACK KNIGHT VIVA	CHEVROLET	4787
MCA/25	M. CARDY	QUO VADIS	JAGUAR	3800
MCA/26	PETE MITCHELL	TRAVEL TEE	JAGUAR	3800
MCA/29	PETE SKINNER	MIDAS MIST	JAGUAR	3800
MCA/31	SUSAN COLES	HELZAPOPPIN	CHEVROLET	4297
MCA/33	D. CHESTER	POCNER 2	CHEVROLET	4297
MCA/34	CHRIS ISON	WILD MONEY	JAGUAR	3442 s
MCA/35	RICHARD FIELDING	IMAGINATION	LOTUS	1502 s
MCA/37	KEVIN HARVEY	MR. SHIFT	CHEVROLET	3500
MCA/41	DAVE YOUNG	RED RAMPAGE	CHEVROLET	7000
MCA/42	ALAN FULLER	TIME TRAVELLER	JAGUAR	3800
MCA/47	JOHN WRIGHT	VENDETTA	JAGUAR	3400
MCA/48	ALAN SHEARIN	TRAVEL AGENT	JAGUAR	3800 s
MCA/51	PETE HAWKINS	POISON IVY	Jaguar	3800
MCA/56	DAVID JOHNSON	TRACKSHUN/ACKSHUN II	Ford	4800
MCA/57	MICK SAUNDERS	THE ANIMAL	Chev	4787
MCA/62	Liz Ledster	Blizzie Lizzie	Ford	5770
MCA/66	PETER BLAKE	SCARAB	Chev	5090
MCA/67	S. Ledbrook	Zilder Rider	Jaguar	3480s
MCA/70	ROGER MEEK		Ford	4800
JCA/8	S. MALBY	THE SYNDICATE	Ford	3800
JCA/9	BRIAN MONDEY	MELLOW YELLOW	JAGUAR	3800
JCA/11	P. Nicholls	OPTIMIST	JAGUAR	3800
JCA/12	D. HINKLEY	Tonks	Ford	1022
JCA/17	D. MILES	MOODY BLUE	BMC	850
JCA/20	B. LUCAS	BABY DRIVER	BMC	850
JCA/21	T. SPENCER	ONTOE	BLMC	1310
JCA/22	BARRY SHEAVILLS	2 TON CARMEN	JAGUAR	2795 s
JCA/27	C. LONES	STAGE COACH	JAGUAR	3400
JCA/30	JON ANNEAR	ALKY-HOLIC	JAGUAR	
JCA/32	A. WILSON	UNCLE SCRUMBLE	JAGUAR	1300
JCA/40	C. CARVER	SOUTHERN COMFORT	JAGUAR	3800
JCA/45	S. LOWES	ORANGE BOND	DAIMLER	4500
JCA/46	JAMES LEECH	TEE-TOTAL	JAGUAR	3400
JCA/58	N. J. Newton	METRONOME	DAIMLER	2500
JCA/69	D. Thomas	DE JUDGE	JAGUAR	3781
		Paranoia	Jaguar	3800

Introducing some of the Swedes

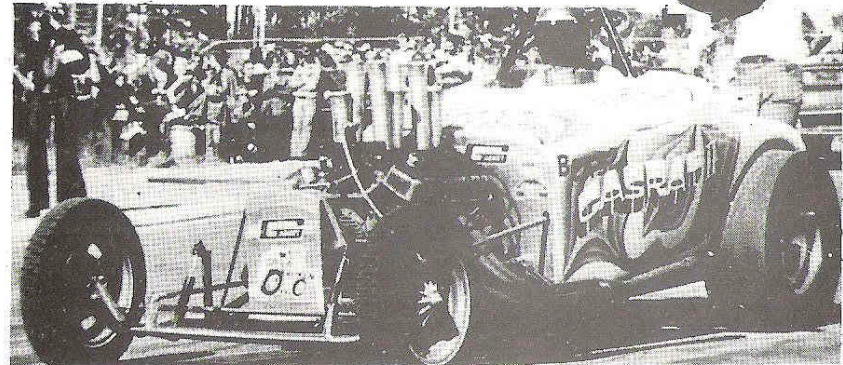
Photos by Kjell Gustavson with thanks to Start and Speed



Svente Erikson burns out his 9 sec. Street Altered Jeep



The Canon, an immaculate Funny Car

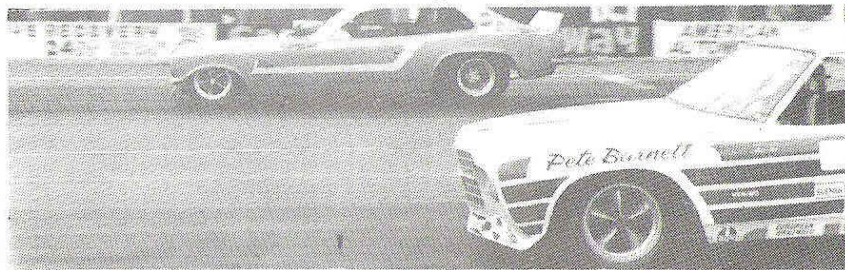


Gas Rat II has been to England on several occasions

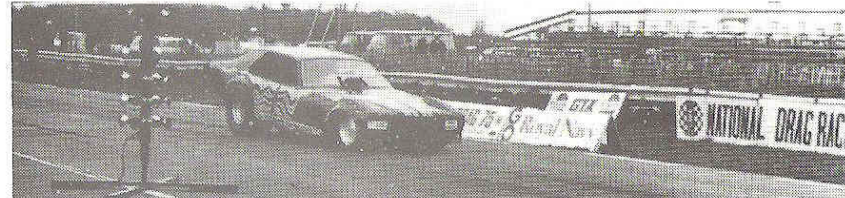
SWEDISH EXPECTED INTERNATIONAL COMPETITORS

DRAGSTER	John Anderson	Valkyrian	Dodge	7000 s
FUNNY CARS	Leif Darback	Peders Backfire	Chevrolet	7500 s
	Bjorn Andersonn	Open Manta	Chevrolet	
	R. Larson/A. Ryman	Canon	Chevrolet	7500 s
	Hazze Fromm	Roaring Viking	Dodge	8500 s
PRO-STOCK	Bengt Back	More Frightened	Chevrolet	7000
COMPETITION ALTEREDS	Anders Lantz	T. Roadster	Chevrolet	7000
	Bengt Stafberg	Gas Rat II	Chevrolet	6500
	Tony Jonson	Plymouth 33 Coupe	Chevrolet	7000
STREET ALTEREDS	Svente Erikson	Jeep	Chrysler	7000
	Bengt Frederikson	Foot Batt	Ford	5000
	Bengt Kene	E93A Anglia	Chevrolet	7500
MODIFIED STREET		Salt 'n' Pepper	Volvo	1800
DUTCH Motorcycles expected	Henk Vink	Kawasaki	1500 s	
	Peter Zuiver	Kawasaki	750	
	Anton De Voss	Kawasaki	900	
	Tom Pels	Triumph	500 s	

Some of Britain's leading drag racers



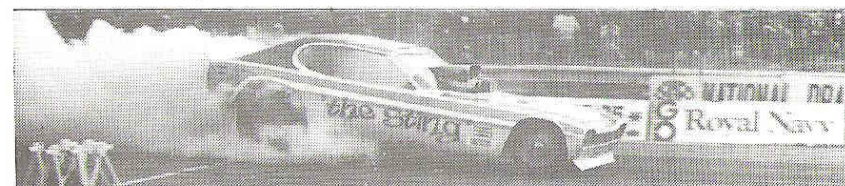
Dennis Priddle's new Avenger Funny Car leads out Pete Barnett in The Castrol Funny Car



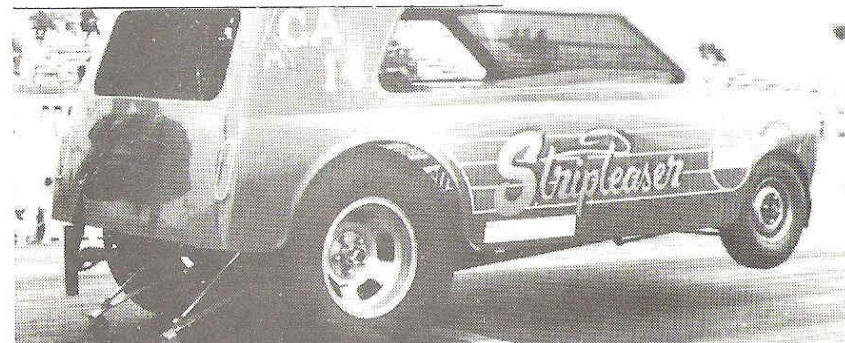
Clive Skilton's Vauxhall/Castrol Funny Car



Revell's Hillbillies burns out at Snetterton

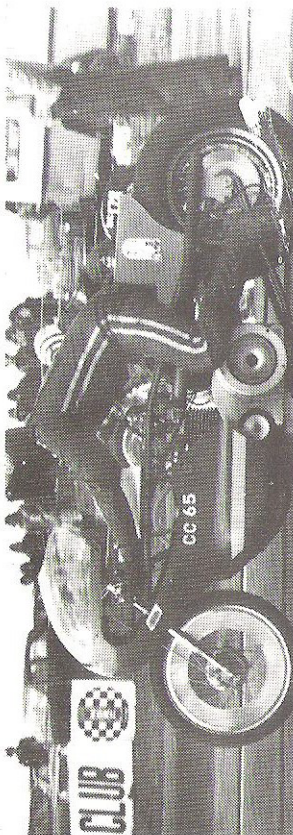


Liam Churchill lays down the rubber with his Capri Funny Car



Another wheelie from the 10 sec. Stripteaser

No.	NAME OF DRIVER	NAME OF CAR	ENGINE MAKE	c.c.
PRO STOCK:				
PRO/3	COLIN MULLEN	LONDON HEAVY	CHRYSLER	6900
PRO/7	GARRY GOGGIN	CLUNK CLICK	CHEVROLET	7100
	David Rose	Cracklin Rose	Hemi Cuda	5800
	Roy Osborne	Insurance in Motion	Chevy Nova	7000
	Tony Dickson	Money Hungry	Chevy Camaro	—
	Mustapha Erol	Mean Machine	Chevy Camaro	7000
	Steve Osmond Petrie	East Riding	Chevy Camaro	—
STREET ALTEREDS:				
ASA/5	D. BLOCK	ESCORT V8	CHEVROLET	
ASA/8	ALAN O'CONNOR	AL'S GASSER	CHEVROLET	4951
ASA/23	R. EAST	CAPRI	CHEVROLET	5760
ASA/25	DENNIS STONE/D.L.T.	TENDER TRAP	JAGUAR	3800
TSA/6	C. LUKE	HERALD JAG	JAGUAR	3500
TSA/9	G. BALFRE	MORGAN V8	CHEVROLET	5280
TSA/14	W. J. ROBINSON	SLOWCOACH	CHEVROLET	5820
TSA/16	JOHN ROBERTS	ZODIAC	CHEVROLET	5280
TSA/17	B. SANDERS	ZIPPIE ZODIE	FORD	2992
TSA/22	BOB SAUNSBOROUGH	MR. TORQUER	JAGUAR	3800
TSA/28	J. E. RICHES	HONEY PIE	FORD	1498
SSA/2	D. WILSON	TALLY HO		1620
SSA/4	A. MURKIN	ROCHDALE	LOTUS TWIN CAM	102.
SSA/7	S. JOHNSON	Lotus	Begetune	1788
SSA/20	K. POTTER	LOTUS 7		1650
SSA/21	BILL MARSHALL		CHEVROLET	5300
SSA/	J. ROBERTS		Ford	1998
SSA/32	R. Brett		LOTUS TWIN CAM	1525
SSA/39	S. HOVEY		FORD	1620
MSA/7	R. GIBBONS	BOND EQUIPE	FORD	1600
MSA/34	BOB KNIGHT		Ford	1750
MSA/38	D. Johnston	Blue Lagoon	FORD	1825
MSA/41	HAZEL WLOSZEK	MEANIE MINOR	Ford	1500
JSA/40	W. Robinson			
MODIFIED				
AM/12	DAVID ROSE	CRACKLIN' ROSE	CHRYSLER	7100
AM/19	MUSTAPHA EROL	MEAN MACHINE	CHEVROLET	6900
AM/48	S. Osment-Petrie	Boulevard Bandit	Chevrolet	7085
TW/3	ROBERT ORAM	RED E	JAGUAR	3800
TW/5	IVAN FRYER	MUSTANG	FORD	5700
TW/8	JOHN LEDSTER	BIG JOHN	FORD	4738
TW/9	M. COLLINS		FORD	4738
TW/21	D. STAMP	BOUNTY HUNTER	CHRYSLER	5574
TW/23	MEL WOODING	BLUE ROSE II	FORD	4738
TM/31	DENNIS MUTTON	BLACK MAGIC	FORD	6900
TM/37	SYLVIA READ	MOPAR MISSILE	CHRYSLER	
TM/43	DENNIS WHEATLEY	CHRYSLER	CHRYSLER	7100
TM/45	MR. WIND	CHEVROLET CAMARO	CHEVROLET	
SM/4	R. VAUGHAN	CAPRI	FORD	2994
SM/7	S. JOHNSON	MOTOR MOUSE	BLMC	1275
SM/29	MORRY MORICE		JAGUAR	3800
MM/1	G. EATON	BEEBLE	VW	1701
MM/6	ROBIN TALLIS	COOPER S	BLMC	1293
MM/7	STEVE JOHNSON	COOPER	BLMC	1210
MM/10	S. CLARK		LOTUS	1428
MM/17	D. WARD	BLUE MAX	BLMC	1253
MM/20	E. MATTHEWS		FORD	2000
MM/22	B. SAUNDERS	CAST CLUBMAN	BLMC	1275
MM/24	C. MAYBURY	ESCORT	FORD	1500
MM/27	J. NEWMAN		FORD	1340
MM/28	TED GILBERT	COOPER	BMC	1400
MM/30	PAUL SHEPLUCK	COOPER	BLMC	975
MM/53	B. BRANSOM		LOTUS	1600
JM/13	C. MIRIAM		BLMC	1098
JM/16	I. CULLING	MINORITY	BLMC	1098
JM/25	D. EDWARDS	MINI	BLMC	1098
JM/26	P. HERRICK	MUSCLE SPROUT	BMC	975
JM/46	R. G. TURNER	Minority II	B.M.C.	998
JM/51	C. Topping			
PRODUCTION				
AP/18	J. CHURCHILL		JAGUAR	4200
BP/28	B. Byrne		Chevrolet	6492
BP/199	MR. GREENWOOD		FORD MUSTANG	6350
BP/100	MIKE CHURCHILL		FORD MUSTANG	6350
CP/28	B. BYRNE	CAMARO SS	CHEVROLET	
CP/84	A. FROOME	CORVETTE	CHEVROLET	5700
DP/30	K. POTTER	LOTUS EATER	FORD	1598
DP/61	K. EVANS	JAGUAR Mk 2	JAGUAR	
DP/63	K. CHURCHILL	MUSTANG	FORD	4700
EP/5	TERRY LEE	CAPRI	FORD	2994
EP/12	J. NEWMAN		FORD	4738
EP/23	W. REIS	SUNDANCE	FORD	4738
EP/29	T. BROWN	FIRENZA	JAGUAR	3781
EP/62	DENNIS HARRIS	Taboo	Vauxhall	2279
EP/81	L. Meyers	Silver Machine	Ford	2994
EP/90	B. Middleton		Vauxhall	1975
EP/99	K. GUTHRIE		FORD	2992
FP/9	DAVID EAST	DORMOUSE	VAUXHALL	1975
FP/14	J. MERCHANT	MEXICO	FORD	1608
FP/15	J. Ward		Ford	1601
FP/57	J. Luckman		Vauxhall	3293
GP/2	J. UDALL		FORD	1498
GP/47	STEVE STEVENS		FORD	2000
GP/69	JENNIE WARING		BMC	
GP/91	R. FOALE		MORRIS	1650
GP/93	R. K. CRACKNELL		CHRYSLER	875
HP/1	GRAHAM BUSHWELL	COUNTRYMAN	BLMC	1650
HP/26	T. COLEBROOK	CORTINA GT	FORD	1498
HP/27	DAVID WARING	HONDA	HONDA	790
HP/40	J. BAILEY	ALPINE		
HP/44	P. Evans	Super Vogue	Singer	1725
HP/48	M. Cowell	Snoozy	B.M.C.	1098
IP/27	DAVID WARING		HONDA	785
IP/11	MICK HILLIER	BEEBLE	VW	
IP/31	K. LYONS	LITTLE WHITE BULL	CHRYSLER UK	908
JP/89	Shirley Proyer	Daf 66	DAF	1108
KP/4	T. ELLEY	MIDNIGHT	VW	1285
KP/11	J. Hillier	Passion Wagon	V.W.	1492
KP/88	J. Platt		V.W.	1584



STREET MOTORCYCLES

CS/23	NAME	ENGINE	c.c.	RIDER
CS/23	Norton	Norton	828	Phil Bristor
CS/41	Hadleigh Honda	Honda	1000	Chris Russell
CS/42	Kawasaki	Kawasaki	903	Graham Beharrell
CS/53	Vindictive	Vincent	998	Ray Elgar
CS/86		Honda	899	Alex Heal
CS/93		Norton	828	Jonathon Sharp
CS/149		Norton	828	Roger Etoall
CS/165	Assassin	Honda	812	Terry Revill
CS/207	Conquistador	Honda	900	Colin Digby
CS 300	Denco Kawacka	Kawasaki	750	Mike Cazalet
DS/17	Kawasaki H2	Kawasaki	750	David Fandall
DS/78	Shribsa	Triumph	649	Keith Porter
DS/110	Roy's Toy	Honda	748	Roy Dutton
DS/115	Commando	Norton	750	John Manning
DS/148	The Underdog	Triumph Westlake	700	Brian Hodgins
DS/153	Barnsley Bitta	Triumph	750	Ralph Boreham
DS/166		B.S.A.	750	Malcolm Pinnock
DS/170	Spider Triton	Triumph	750	S. Kennington
DS/182	Dominator	Norton	745	Roy White
ES/146	King Cobra	Kawasaki	498	Philip Steele
ES/155	Hocus Pocus	Triumph	750	Pip Higham
ES/191		Kawasaki	500	Jon Seunders
FS/116		B.S.A.	350	Frank Carstoult
FS/167	Speedbird	Montesa	248	Joan Chessman

COMPETITION MOTORCYCLES

AC/1	NAME	ENGINE	c.c.	RIDER
AC/1	Pegasus	Norton	1660	Dereck Chinn
AC/7	The Hobbit	Westlake	1700	John Hobbs
AC/20	Locomotion	V.W.	1975	John Lloyd
AC/31	Big Blue	Triumph	1500	Mick Warne
AC/48	In Transit	Ford	1998	Chris Georgii
AC/50	Windrush II	Puma	1750	Roger Williams
AC/57		M.G.B.	1800	David Branch
AC/69	Olympus II	Triumph	1500	Chris Richards
AC/89		Triumph	1500	Don Johnson
AC/108		Triumph	1950	John Jacque
AC/111	Wells Fargo	Ford	2000	David Hodge
AC/123		Triumph	1850	David Johnson
AC/200	Conquest II	Norton	1656	Dennis Norman
BC/33	Leviathan	Harley Davidson	1200	Jeremy Normall
BC/107	Rebell II	Harley Davidson	1170	Tony Bartram
BC/199	Lonewolf	N.S.U.	1177	Alan Thompson
BC/208	Venturo I	V.W.	1192	John Charlton
CC/2	Super Cyclops (Hobb's Slayer)	Butler Special	998	Mick Butler
CC/11	Vindicator	Vincent	998	Grant Sleighthrute
CC/24	Moody	Royal Enfield	850	Norman Castle
CC/30	Penetration	Norton/Puma	875	Ray Fellwell
CC/32	Paper Tiger	Triumph	810	Ted Dunmow
CC/47	Super Baddie	Triumph	916	Mike Honey
CC/53	Miwackie Rebel	Harley Davidson	756	Chris Aris
CC/65		B.M. 900	895	Pete Miller
CC/83	Flying Cornishman	Triumph	820	Ken Gee
CC/129	Camrat	Triumph	1000	Barry Townsend
CC/157	Vincent	Vincent	998	Clive Liddiard
CC/168	Polaris 2	Norton	830	Ivan Wileman
CC/187	Turbocharged	Imp	998	Eamon Hurley
CC/189	Aedes	B.S.A.	840	A. Norton
CC/204		Triumph	995	Ray Law
DC/8	Renegade	Triumph	700	Kevin Lloyd
DC/12	Drag On	Norton	750	Johnny Munn
DC/18	Shagrat	Triumph	750	Steve Tidy
DC/19	Banana Split	Triumph	650	John Kaine
DC/21	Phaedra	Triumph	650	Ken Hayhoe
DC/45		Triumph	648	Robert Bailey
DC/56	Tempest	Triumph	750	Richard Le Page
DC/64	G.T.S.	B.S.A.	650	C. Harvey
DC/70	Blue Magpie	Triumph	750	Robin Read
DC/81		Triumph	512	Mike Lemon
DC/84	Patience	Triumph	648	Derrick Penfold
DC/91	Ramrod	Triumph	648	Dennis Allen
DC/96	Artemis	Triumph	736	Mick Butters
DC/100	Revelation 75	Triumph	660	Carl Bailey
DC/102	Wild Dream	Triumph	650	Ashton Cox
DC/105	Paradise	Triumph	740	Barry Beaumont
DC/109	The Misfit	Triumph	658	John Stubbley
DC/114	Cheltenham Flyer	Triumph	740	Brian Smith
DC/120	Purple Plus	Triumph	649	David Page
DC/122	Musk Rat	Triumph	725	Paul Jossey
DC/127	Mr. Shifter	Triumph	650	Robert Harpin
DC/135	Predator	Triumph	650	Brian Nicholls
DC/142	Cyclops I	Norton	600	Barry Wigham
DC/143	The Gitanes Phantom	Triumph A.R.E.	748	Phil Drake
DC/147	Savage	Triumph	750	Sid Austin
DC/160	The Prophet	Harley Davidson	745	Mike Butcher
DC/164	Terrison Special	Triumph	749	Ron Hughes
DC/167	The Co-respondent	Triumph	750	John Clift
DC/178	Rouge et Noir	Triumph	735	Keith Parnell
DC/179	Black Manba	Triumph	750	Brian Elson
DC/183	Odin 2	Triumph	750	Peter Smith
DC/206	Longshot	Triumph	650	Paul Taylor
EC/35		Triumph	498	Anthony Marsh
EC/51	American Triumph	Triumph	498	Tony Weedon
EC/67	Mighty Mouse	Vincent	500	Brian Chapman
EC/71	Delta Capy	Triumph	498	Mick O'Hara
EC/75	Will It	B.S.A.	500	Geoff Mussell
EC/82	Volcano	Vilcoette	500	David Hewitt
EC/87		Holcoette 4	498	Paul Eastbury
EC/89		Triumph	498	Roger Forsyth
EC/124	Alter Ego	Norton	497	Martin Willmott
EC/145	Threshing Machine	Triumph	500	David Hamer
EC/150		Triumph	500	Robin Reed
EC/151	The Mutant	Triumph	500	Andrew Miller
EC/156	Techtron	Triumph	448	Gary Cunningham
EC/193	X-Ray	Triumph	498	Barry Eastman
FC/22	Nitrofunction	Suzuki	246	Warwick Barnes
FC/28	Suzuki	Suzuki	348	John Chesdie
FC/55	Frontiersman	Yamaha	247	Mick Hand
FC/61	Little David	Honda	325	Richard Albans
FC/72	Mirage	Yashimura Honda	249	Alan Gooch
FC/73	Ainoreena	Yamaha	346	Paul Rose
FC/77	Penny machine	Yamaha	250	Brian Howells
FC/101	Siberiaught	Ariel	340	James Balchin
FC/112	Double J BSA	B.S.A.	250	William Turner
FC/113	The Rat	Royal Enfield	249	Peter Agar
FC/119	Outcast	Yamaha	247	Roger King
FC/126	Smokey	Ariel	349	Peter Barry
FC/130	Trijoan	Triumph	248	G. Woods
FC/161	Unicorn	Triumph	350	J. Strugnell
FC/185	Dragster	B.S.A.	247	Sebastian Kent
FC/205	Yamaha Sidewinder	Yamaha	247	Ron Cheesman
		Montesa	247	



Autographs

MOTORCYCLE NEWS TOP BIKE CHAMPIONSHIP UP TO DATE POSTIONS

MCN points position to date	Points
Brian Chapman	40
Mick Butler	35
Keith Parnell	20
Dereck Penfold	15
Peter Miller	10
Ted Dunmow	10
Peter Smith	5
Phil Drake	5
Clive Liddiard	5
Tony Weedon	5